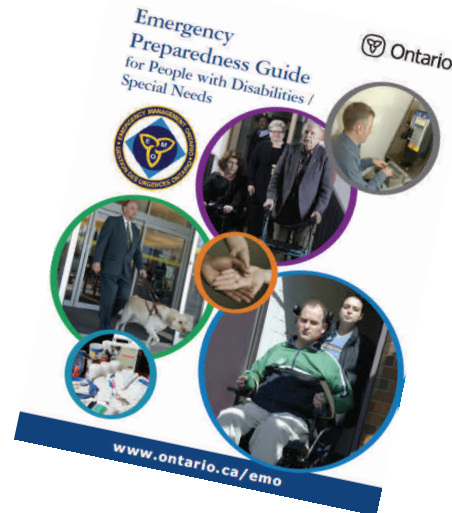


## Your Emergency Plan

- create an emergency contact list with names and telephone numbers of your family members, physicians, case worker, contact for your seniors group, neighbours, building superintendent, etc. and keep a copy in your survival kit and on your person
- write down the names and phone numbers of on-site doctors, nurses, social workers etc. at your place of residence (if applicable) including the hours they keep
- familiarize yourself with all escape routes and location of emergency doors/exits in your home or facility that you are in
- know the location of emergency buttons (many seniors' buildings have emergency buttons located in bedrooms and wash-rooms with a direct link to 911 or the building's superintendent)
- if asked to evacuate, bring any equipment or assistive devices you may need immediately
- current photo of your service dog in case it gets lost or separated from you



Information drawn from the Emergency Preparedness Guide for People with Disabilities/Special Needs, prepared by Emergency Management Ontario  
© ISBN 978-1-4249-2380-9 in partnership



**Town of Saugeen Shores**  
**600 Tomlinson Drive**  
**Port Elgin, ON NoH 2Co**  
**Phone: 519-832-2008 Ext. 105**  
**Fax: 519-832-2140**  
**Tracey Edwards, Deputy Clerk**

## Service Animals & Support Persons



## Emergency Preparedness



**Town of Saugeen Shores**

# ☰ Service Animals & Support Persons

## Service Animals

- (i) A “guide dog” as defined in section 1 of the Blind Persons Rights Act; or
- (ii) A “service animal” for a person with a disability. For the purpose of the Municipalities policy, an animal is a service animal for a person with a disability.
  - (a) If it is readily apparent that the animal is used by the person for the reasons relating to his/her disability; or
  - (b) If the person provides a letter from a physician or nurse confirming that the person requires the animal for reasons relating to the disability

## Support Persons

Support person means, in relation to a person with a disability, another person who accompanies him or her in order to help with communications, mobility, personal care or medical needs or with access to goods or services.

The Town of Saugeen Shores will allow people with disabilities who require, to be accompanied by a support person in all Municipally owned and operated facilities and reserve the right to request the person with a disability be accompanied by a support person, in the even that it is considered necessary to protect the health and safety of the person with the disability or other on the premises. The Town will waive admission fees for support persons who accompany a person with a disability, into facilities where admission is charged

## Service Dog Checklist

This Service Dog Emergency Kit Checklist outlines the basic items every person with a service dog should have prepared in advance to keep their service animal comfortable during the stress of an emergency situation. It is advisable to keep all items in a transportable bag that is easy to access should evacuating the home become necessary. Also, remember to check the kit twice a year to ensure freshness of food, water and medication and to restock any supplies you may have borrowed from the kit.

Note: an easy way to remember is to do it when you change the clocks or when you check your smoke alarms bi-annually.

- 🐾 minimum 3 day supply of bottled water and pet food
- 🐾 paper towels and can opener
- 🐾 medications with a list identifying reasons (e.g. medical condition), dosage, frequency and contact information of prescribing veterinarian
- 🐾 medical records including vaccinations
- 🐾 leash/harness
- 🐾 muzzle (if required)
- 🐾 blanket and favourite toy
- 🐾 plastic bags
- 🐾 up-to-date ID tag with your phone number and name/phone number of your veterinarian (micro chipping is also recommended) current photo of your service dog in case it gets lost or separated from you
- 🐾 copy of licence (if required)

## Pet Owners

While service dogs are accepted at shelters in an emergency, family pets are not, therefore it is advisable for pet owners to prepare a similar emergency kit for each family pet. In the case of cats, include a cat carrier litter pan, litter, scooper and plastic bags. It is also recommended for pet owners to make arrangements with family and friends to care for their pets should it become necessary to evacuate the home.



**Emergencies** can occur at any time and your best defence is to be prepared. The Town of Saugeen Shores’ pamphlet series on emergency preparedness for people with disabilities/special needs includes:

- \* Hearing
- \* Mobility
- \* Non-Visible Disabilities
- \* Seniors With Special Needs
- \* Travel Considerations
- \* Vision

